



BWFC MEMBERS ATTEND OUR ANNUAL  
"PROFESSIONAL LEADERSHIP IN MEDICINE & SCIENCE CONFERENCE."

# Brody Women Faculty Committee

## Fall 2015 Newsletter

IN THIS ISSUE

## Welcome (back) to the BWFC!

by Dr. Lisa Domico, BWFC Chair, 2016-2016

### Greetings!

I am Lisa Domico, Chair of the Brody Women Faculty Committee for 2015-2016. I am excited to take on this role and look forward to a great year ahead. Please join me in thanking Ruth Little, BWFC Chair 2014-2015, and the Executive Committee for their efforts last year.

On behalf of the 2015-2016 BWFC Executive Committee, I encourage you to join BWFC this year. Please follow the link associated with this newsletter to complete your annual membership form. Remember that annual renewal of your BWFC membership is required! It is free, takes very little time, and ensures that you receive up-to-date information relevant to BWFC.

Part of our mission is to "provide a forum for all women professionals at BSOM to augment their professional skills and enhance their career development." Our program chairs have created a very exciting and diverse calendar of events for the upcoming months, including

seminars and workshops on leadership and promotion geared specifically toward our needs and goals as a group. Our lunch meetings are held once a month in BSOM 2W-50 and are open to all! Join us, stay connected, meet your colleagues, discover opportunities for advancement and advocacy, and become involved in the current issues at hand for women faculty at BSOM. I look forward to seeing you all soon!

### AAMC Mid-Career women Faculty Profession Development Seminar

The BWFC will select an individual to attend the Mid-Career Women Faculty Professional Development Seminar hosted by the Association of American Medical Colleges (AAMC). This year's meeting is December 12-15, 2015 in Austin Texas. Applications for the seminar open soon and close in mid-October. This award will help to offset the costs of attending this seminar. Recipients will be asked to make a presentation to the BWFC at a future BWFC Open Forum meeting. Please contact Dr. Domico for more information about applying for this award opportunity!

### Meeting calendar

Plan your academic year to include BWFC business and program committee meetings.

### Meet the 2015-2016 BWFC Executive Committee

Find out a little bit more about the people who YOU elected to represent YOUR needs & interests.

### News & Updates

Get up to date on information relevant to faculty with the Brody School of Medicine.

## Membership

Electronic membership form:

[https://ecu.az1.qualtrics.com/SE/?SID=SV\\_0J1MKdujXvEisn3&Q\\_JFE=0](https://ecu.az1.qualtrics.com/SE/?SID=SV_0J1MKdujXvEisn3&Q_JFE=0)

## Web Page

<http://www.ecu.edu/cs-dhs/bwfc/index.cfm>

## 2015-2016 Meeting Dates

All regularly scheduled business and program meetings will be held in **BSOM 2W-50** from **12:00pm – 1:30pm**.

We will make every effort to provide lunch during the program meetings, but will ask you to "brown bag it" for some of the business meetings. We have a fairly rigorous program schedule this year and are directing our budget toward delivering excellent professional development programs for our members.

Please note our program meetings:

**10/21/15 – Professional conduct.** Speakers: *Dr. Jennifer Crotty, MD*, Assistant Professor of Pediatrics and *Sara Lilley*, West Campus HR Consultant. Panel: Dr. Crotty, Miss Lilley, and Dr. David Holder, MD, Associate Professor of Pediatrics. Have you ever encountered someone who frustrates you to the point that you want to pull your hair, jump around the room and just scream out loud? You're not alone. Rather than turn to drastic measures, why not equip yourself with the skills to deal with them? Join us to hear how to cope with handling unreasonable and difficult people. Be prepared to share some of your experiences and ask our expert panel for advice.

**12/15/15 – Mid-career mojo.** Panelists: *Dr. Eleanor Harris, MD*, Professor & Chair of Radiation Oncology; *Dr. J.E. "Betsy" Tuttle-Newhall, MD*, Professor & Chair, Surgery Immunology & Transplant; *Dr. Burrell Montz, PhD*, Professor & Chair, Geography; and *Dr. Kathryn Verbanac, PhD*, Professor, Surgical Oncology. These inspirational women will break the myth that once professors receive tenure, they no longer need mentoring. Unlike the tenure decision and promotion from assistant to associate professor, there is no firmly established or implemented timeline for promotion to this highest rank, nor are there clearly defined performance expectations. This

Date	Topic
September 15, 2015	Welcome back! Open forum to bring you up to speed on 2015-2016 goals & events.
October 21, 2015	<i>Professional Conduct: How to deal with changing mentees &amp; colleagues.</i>
November 19, 2015	Open forum on professional societies – new chapters & opportunities for ECU.
December 15, 2015	<i>Finding your Mid-Career Mojo: I have tenure, now what?</i>
January 20, 2016	Happy new year! Open forum on BWFC awards & recipient experiences.
February 18, 2016	<i>The Art of Graceful Self-Promotion.</i>
March 15, 2016	Open forum on maintaining work life balance in academic medicine
April 19, 2016*	<b>*Professional Leadership in Science and Medicine Conference*</b> <i>Effective Professional Communication in an Academic Setting.</i>
May 19, 2016	Closing meeting & elections for 2016-2017.

\*The leadership conference will be held at the East Carolina Heart Institute (ECHI).

panel will provide insight, information, and support that will facilitate the advancement of faculty from the rank of Associate to the rank of Full Professor.

**2/18/2015 – Graceful self-promotion.**

Speaker: *Dr. Kimberly Skarupski, PhD MPH*, Assistant Deal of Faculty Development, Associate Professor of Medicine, Johns Hopkins School of Medicine, Baltimore, MD. If you want to succeed, you have to gain visibility. One way to gain visibility is to self-promote. But many of us are uncomfortable talking about ourselves. Why is that and



how can we change this behavior? In this session, you will learn the difference between shameful and graceful self-promotion and practice speaking diplomatically and strategically about yourself and your accomplishments.

**4/19/15 – Professional Leadership in Science and Medicine Conference: Effective professional communication.**

Speaker: *Dr. Erin Wolf*, Executive Director, Women's Leadership Center, Lecturer, Executive MBA Program,

Michael J. Coles College of Business, Kennesaw State University, Kennesaw, GA. Erin Wolf considers herself a bit of an anomaly. She worked on Wall Street when few women did, and her resume reads like a laundry list of elite Wall Street firms: Bain & Company, Goldman Sachs, Accenture and Salomon Brothers, Inc. In 2011, Erin brought 25 years of experience in leadership development to the Coles College of Business when she was named an executive-in-residence, and has served as executive director of the Women's Leadership Center (WLC). Erin is an author, executive coach and consultant in the areas of leadership development, organizational change, and organizational strategy will be facilitating a half-day leadership workshop for BWFC's Annual Conference. The workshop will feature two sessions; Language, Communication & Influence and Personal Branding. You can read more about Erin at <http://www.suitetrack.com/leadership>.



# 2015-2016 BWFC Executive Committee



**Dr. Lisa Domico**  
Chair

Position: Teaching Instructor, Department of Pharmacology & Toxicology.  
Education: PhD, Rutgers, The State University of New Jersey.  
Research Focus: Environmental toxicology and the mechanisms by which exposure to environmental agents are correlated with disease.



**Dr. Ruth Little**  
Past-chair

Position: Vice Chair and Assistant Professor, Department of Public Health.  
Education: EdD, East Carolina University; MPH, University of North Carolina at Chapel Hill.  
Research Focus: Health care deliver to underserved populations, interdisciplinary community education, access to health care, health and aging.



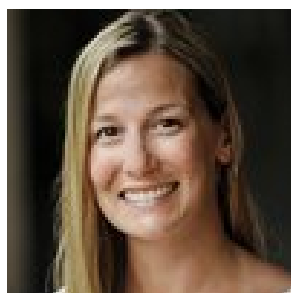
**Dr. Suzanne Lea**  
Chair-elect

Position: Associate Professor, Department of Public Health.  
Education: PhD, University of California, Berkeley; MPH, Yale University.  
Research Focus: Influence of environmental factors in cancer risk, health disparities, and the use of technology to improve public health.



**Dr. Jamie DeWitt**  
Secretary/Treasurer

Position: Associate Professor, Department of Pharmacology & Toxicology.  
Education: PhD, Indiana University.  
Research Focus: Environmental, developmental, neuroimmunotoxicology as related to neurodevelopmental and neurodegenerative disorders.



**Dr. Kimberly Gowdy**  
Program Chair

Position: Assistant Professor, Department of Pharmacology & Toxicology.  
Education: PhD, North Carolina State University.  
Research Focus: Role of scavenger receptors in infectious and inflammatory lung diseases.



**Dr. Johanna Hannan**  
Program Chair

Position: Assistant Professor, Department of Physiology.  
Education: PhD, Queen's University.  
Research Focus: Understanding the pathological mechanisms of vascular and neuronal genitourinary dysfunction in both sexes.



**Dr. Salma Syed**  
Program Chair

Position: Clinical Assistant Professor, Pediatric Infectious Diseases and Immunology, Director, Pediatric HIV Clinic.  
Education: D.O., Kirksville College of Osteopathic Medicine.  
Clinical Focus: Pediatric infectious diseases, HIV, primary immunodeficiencies, pediatric travel medicine, Lyme disease.

Don't forget to renew your BWFC membership or join as a new member!

[https://ecu.az1.qualtrics.com/SE/?SID=SV\\_oJ1MKdujXvEisn3&Q\\_JFE=0](https://ecu.az1.qualtrics.com/SE/?SID=SV_oJ1MKdujXvEisn3&Q_JFE=0)

## The back page...news, updates, and stuff you should know.

### *Do you know about* The BSOM Office of Diversity Affairs?

The purpose of the BSOM Office of Diversity Affairs (ODA) is to promote a diverse and inclusive environment at Brody for students, faculty, and staff by enhancing awareness and knowledge of diversity themes and topics within medicine. We also serve as a resources and advocate for the Brody community and the health sciences campus. We seek to create and maintain an inclusive environment for all members of the BSOM community.

ODA staff also provides support for the BSOM diversity affinity groups, including BWFC, VCDI, and the newly established LGBT Health and Curriculum Workgroup. Please visit our website at <http://www.ecu.edu/bsomdiversityaffairs> to submit comments or for more information. Feel free to stop by our office at Brody 1N16!

The Diversity Coordinator is **Chanel Arrington**.

### *Have you thought about* ECU Teaching and Research Resources?

Did you know that the ECU Office of Faculty Excellence has many seminars and workshops that can aid in your professional development? We may be most familiar with the Promotion & Tenure Workshops, but there is so much more. Fall of 2015 includes: Teaching strategies for online and face-to-face, statistics for quantitative and qualitative research, approaches to student veterans, faculty interest groups, and much more. Many of these sessions are available on mediasite for later viewing too. Many sessions are represented by faculty from

the east campus, tenured and tenure-track alike. It's a good way to meet new colleagues!

Please use the following link for the fall 2015 semester: <http://www.ecu.edu/cs-acad/ofe/sessions-2015-fall.cfm>. And to find out about sessions related to statistics, use this link: <http://core.ecu.edu/ofe/StatisticsResearch>

### *Have you congratulated these women about* the awards they received?

Dr. Rachel Roper, Department of Microbiology and Immunology, will be honored with the **BWFC Advocacy Award** at the first BSOM Full Faculty meeting of the fall semester. This award recognizes individuals who have demonstrated leadership in promoting, encouraging, or implementing policies to facilitate the professional development of women faculty and/or students. Dr. Roper has made a sustained contribution on behalf of women within BSOM and within the entire ECU community. Please congratulate Dr. Roper!



Dr. LaToya Griffin, Department of Pharmacology and Toxicology, received an award to attend the **Early Career Women Faculty Professional Development Seminar** by the AAMC. This seminar is targeted at physicians and PhD scientists holding medical school appointments considering



leadership positions. Congratulations to Dr. Griffin!

### *Have you heard about* Graduate Women in Science?

Dr. Kymberly Gowdy (Pharmacology and Toxicology) and Dr. Jitka Virag (Physiology) are in the process of establishing a Graduate Women in Science (GWIS) chapter here at East Carolina University (ECU). This GWIS chapter will focus on decreasing the deficit of women in science in eastern North Carolina and promoting career development and networking for women in science both at ECU and neighboring universities. One of the major benefits to having a GWIS chapter is the opportunity to apply for GWIS National Fellowships. The GWIS National Fellowships Program is proud to offer fellowships in 2016 to help increase knowledge in the fundamental sciences and to encourage research careers in the sciences by women. For the 2015-2016 funding cycle, GWIS distributed approximately \$70,000 in fellowships funds to fourteen deserving women scientists.

Applications for the 2016 Fellowship will be opening soon. Awards will be announced on or before mid-July, 2015 for funding in the 2016-2017 academic year. The SDE/GWIS National Council will determine exact fellowships amounts with the maximum allowable award being \$10,000. For more information about the ECU GWIS chapter or GWIS fellowships please email Kymberly Gowdy ([gowdyk14@ecu.edu](mailto:gowdyk14@ecu.edu)) or visit the GWIS homepage at <http://www.gwis.org>. An informal information meeting on this will be held at Brody in mid-October.

Don't forget to renew your BWFC membership or join as a new member!

[https://ecu.az1.qualtrics.com/SE/?SID=SV\\_oJ1MKdujXvEisn3&Q\\_JFE=o](https://ecu.az1.qualtrics.com/SE/?SID=SV_oJ1MKdujXvEisn3&Q_JFE=o)